



SHURFLO PRO WASHDOWN KIT™II ULTIMATE 5.0

MARINE WASHDOWN KIT II – PRODUCT TECHNICAL DATA SHEET

OEM: 4358-153-A09
AFTERMARKET: 4358-153-E09



PUMP DESIGN:

Type: 4 Chamber Diaphragm pump
Ports: 1/2"-14 NPSM-Male
Liquid: 130°F [54°C] Max
Dry-Prime: 6 feet [1.82 M]
Run Dry: Yes
Inlet Pressure: 30 PSI Max. [2.06 Bar]

ELECTRICAL:

Motor: 12V DC Permanent Magnet, Intermittent Duty.
Protection: Thermal Overload, Automatic Restart
Leads: 14 AWG, 14 3/4" [37 cm] Red +, 15" [38 cm] Black
Fuse: 20 Amp Recommended
Control: Shut-Off 60 PSI [4.1 Bar] ± 2 PSI [0.13 Bar]
Re-start 45 PSI [3.1 Bar] ± 2 PSI [0.13 Bar]

MATERIALS OF CONSTRUCTION:

Housings: Polypro
Valves/Seals: EPDM
Diaphragm: Santoprene
Hardware: Stainless Steel

AGENCY APPROVALS:

Ignition Protection 8846, CE, IMCI Certified

SHIPPING INFORMATION:

Approx. Net Weight: 10 Lbs. [4.67 Kg] ea.
Carton Qty.: 2
Approx. Carton Weight: 23 Lbs. [10.4 Kg]

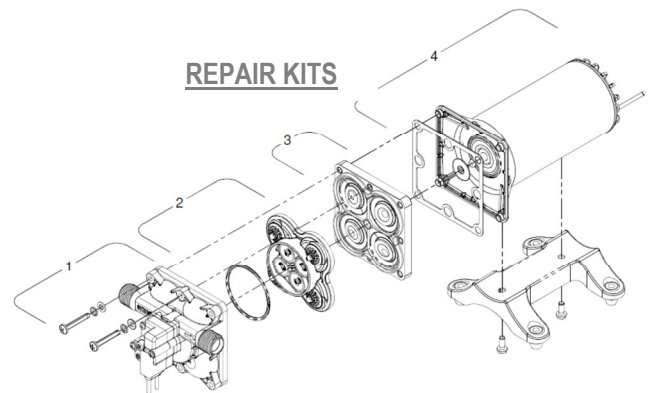
APPLICATION:

Marine fresh or salt water wash-down installation. This pump may be used for general water transfer.

INCLUDED WITH WASH-DOWN KIT:

- Pump model: 4258-153-A09
- Spray Nozzle: 94-010-00
- Self-Coil Hose: 7-137-25
- Garden hose wing nut fitting: 244-2356 (x-1)
- Straight swivel wing nut fitting, 1/2"-14NPT X 3/4" barb: 244-2946 (x-2)
- Straight swivel adapter fitting, 1/2" NPT X 3/4" barb: 244-5146 (x-2)
- Straight fitting, 1/2" barb X 1/2" NPT (male): 244-5126
- Strainer: 253-120-00

REPAIR KITS



| Number | Description | Part Number |
|-----------|----------------|--------------|
| *1 | Upper Assembly | 94-804-02 |
| 2 | Valve Assembly | 94-800-01 |
| 3 | Drive Assembly | 94-801-02 |
| 4 | Motor/Gasket | 94-71-004-17 |
| *1,2,3 | Pump Head | 94-804-03 |
| Not Shown | Check Valve | 94-800-03 |
| Not Shown | Spray Nozzle | 94-010-00 |
| Not Shown | Strainer | 255-315 |

*With preset switch adjustment

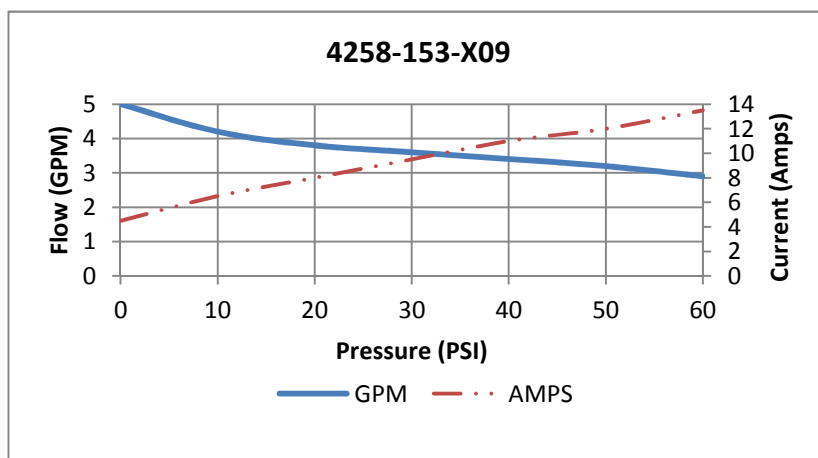
Approx. Carton Size: 24" L X 18" W X 11" H [61cm x 46cm x 28cm]
 Retail (individual) box: 17" L X 12" W X 6" H [43cm x 30cm x 15cm]

RELATED DOCUMENTS:

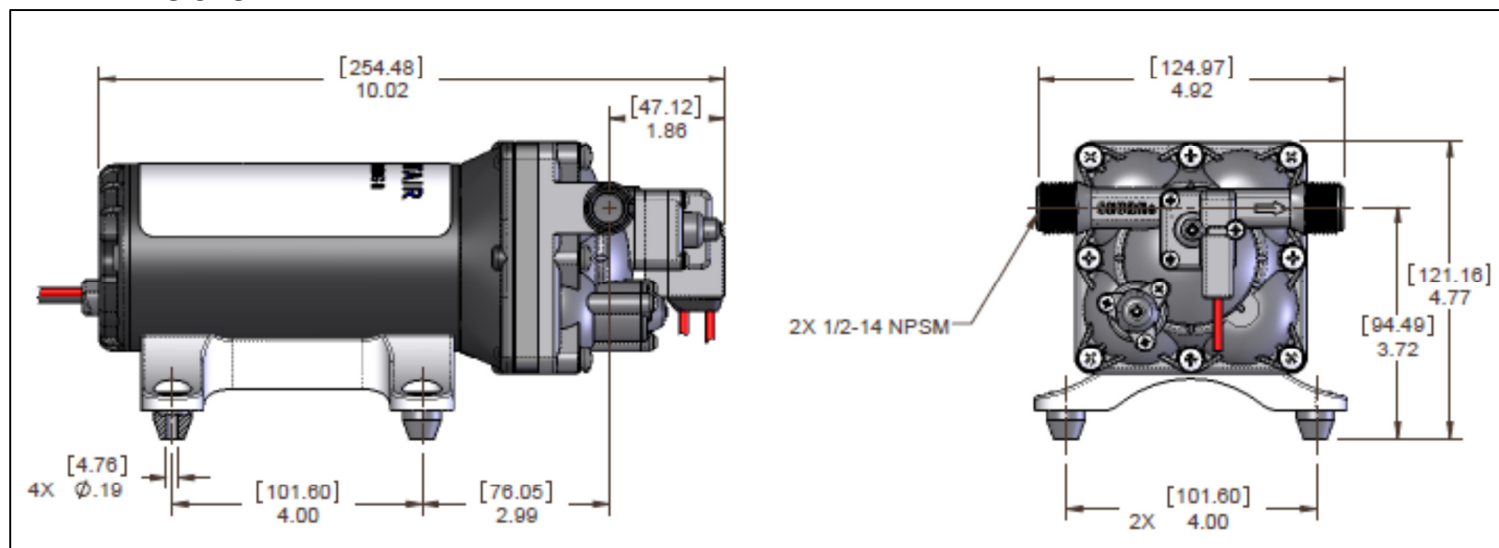
Catalog: MS-030-140
 App Guide Sheet: MS-020-005
 Installation Manual: 911-1035
 Aftermarket Warranty: 911-1045

TYPICAL PERFORMANCE AT 12V

| PRESSURE | | FLOW | | CURRENT |
|----------|-----|------|------|---------|
| BAR | PSI | GPM | LPM | AMPS |
| 0 | 0 | 5.0 | 18.9 | 4.5 |
| 0.7 | 10 | 4.2 | 15.8 | 6.5 |
| 1.4 | 20 | 3.8 | 14.3 | 8.0 |
| 2.1 | 30 | 3.6 | 13.6 | 9.5 |
| 2.8 | 40 | 3.4 | 12.8 | 11.0 |
| 3.4 | 50 | 3.2 | 12.1 | 12.0 |
| 4.1 | 60 | 2.9 | 10.9 | 13.5 |



DIMENSIONS:



FLOW MANAGEMENT SOLUTIONS

3545 Harbor Gateway South, Suite 103, Costa Mesa, CA 92626, (800) 854-3218 www.SHURFLO.com

All Pentair trademarks and logos are owned by Pentair, Inc. All other brand or product names are trademarks or registered marks of their respective owners. Because we are continuously improving our products and services, Pentair reserves the right to change specifications without prior notice. Pentair is an equal opportunity employer.