



SHURFLO AQUA KING™II SUPREME 5.0

MARINE FRESH WATER PUMP – PRODUCT TECHNICAL DATA SHEET

OEM: 4158-153-A75
AFTERMARKET: 4158-153-E75



APPLICATION:

Multi-fixture Marine fresh water pump installation.
This pump may be used for general fresh water transfer

PUMP DESIGN:

Type: 4 Chamber Diaphragm pump
Check Valve: (1-way operation) Prevents Reverse Flow
Ports: ½"-14 NPSM-Male
Liquid: 130°F [54°C] Max
Dry-Prime: 6 feet [1.82 M]
Run Dry: Yes
Inlet Pressure: 30 PSI Max. [2.06 Bar]

Aftermarket model includes:

- 50 Mesh strainer: swivel straight adapter ½-14 NPT (hex-wing nut) X ½-14 NPS (male)
- Fittings: swivel straight adapter ½-14 NPT (hex-wing nut) x ½ barb (Qty. 2)

ELECTRICAL:

Motor: 12V DC Permanent Magnet, Intermittent Duty.
Protection: Thermal Overload, Automatic Restart
Leads: 14 AWG, 14 ¾" [37 cm] Red +, 15" [38 cm] Black
Fuse: 20 Amp Recommended
Control: Shut-Off 55 PSI [3.8 Bar] ± 2 PSI [0.13 Bar]
Re-start 40 PSI [2.8 Bar] ± 2 PSI [0.13 Bar]
Maximum By-Pass 65 PSI [4.5 Bar] ± 2 PSI [0.13 Bar]

MATERIALS OF CONSTRUCTION:

Housings: Polypro
Valves/Seals: EPDM
Diaphragm: Santoprene
Hardware: Stainless Steel

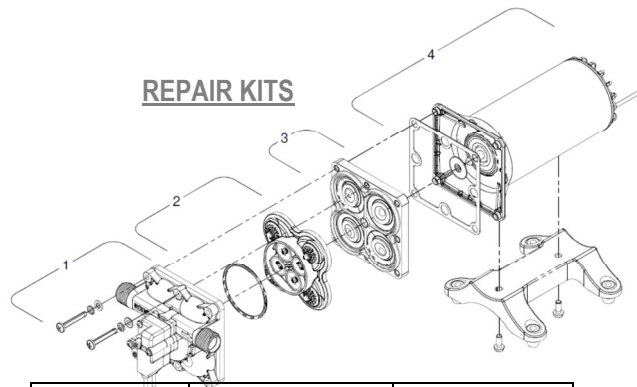
AGENCY APPROVALS:

Ignition Protection 8846, CE, IMCI Certified

SHIPPING INFORMATION:

Approx. Net Weight: 7.9 Pounds [3.5 Kg] ea.
Carton Qty.: 6
Approx. Carton Weight: 50 Lbs. [22.6 Kg]
Approx. Carton Size: 24"L X 18"W X 6"H [61cm x 46cm x 15cm]
Retail (individual) box: 12"L X 6"W X 6"H [30cm x 15cm x 15cm]

REPAIR KITS



Number	Description	Part Number
*1	Upper Assembly	94-801-10
2	Valve Assembly	94-800-01
3	Drive Assembly	94-801-12
4	Motor/Gasket	94-71-000-17
*1,2,3	Pump Head	94-801-13
Not Shown	Check Valve	94-800-03

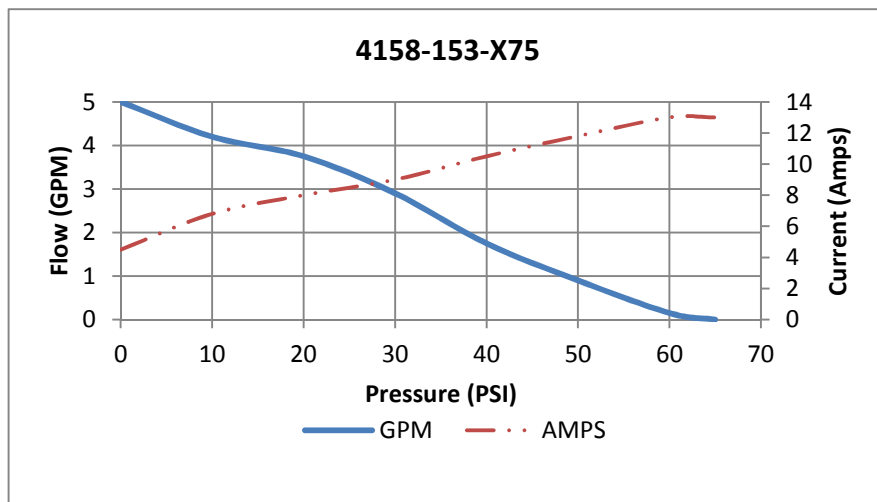
*With preset switch and by-pass adjustment

RELATED DOCUMENTS:

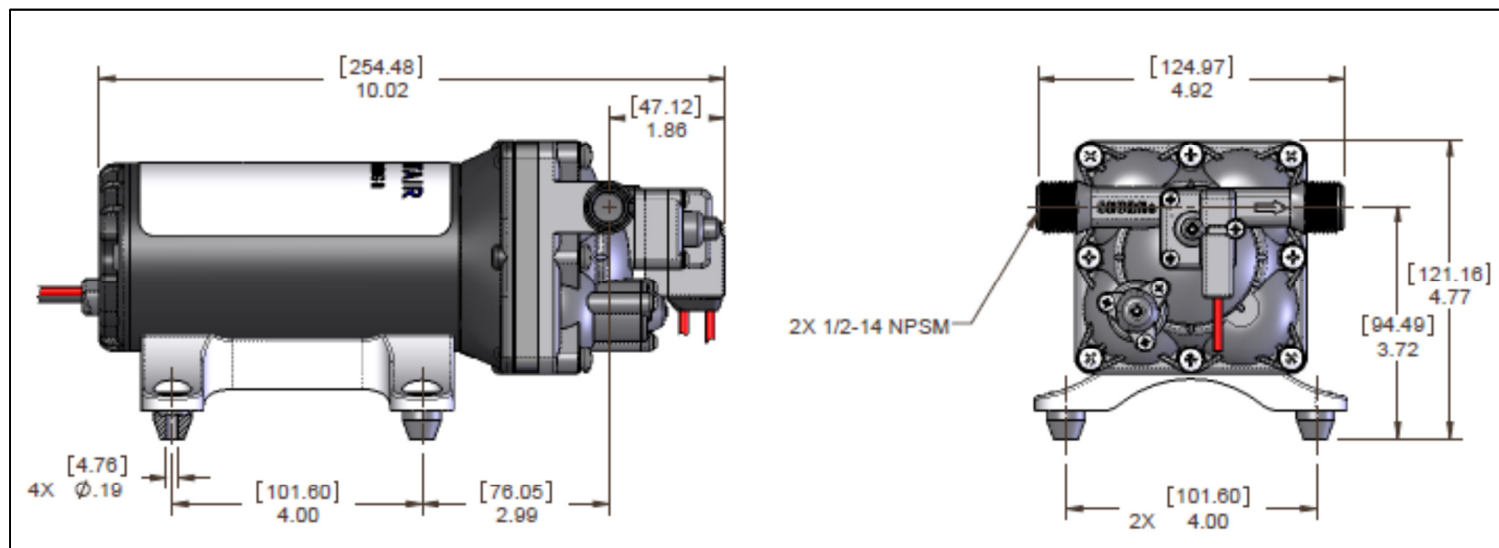
Catalog:	MS-030-140
App Guide Sheet	MS-020-005
Installation Manual:	911-1026
Aftermarket Warranty:	911-1045

TYPICAL PERFORMANCE AT 12V

PRESSURE		FLOW		CURRENT
BAR	PSI	GPM	LPM	AMPS
0	0	5.0	18.9	4.5
0.7	10	4.2	15.8	6.8
1.4	20	3.8	14.1	8
2.1	30	2.9	10.9	9
2.8	40	1.8	6.6	10.5
3.4	50	0.9	3.4	11.8
4.1	60	0.2	0.6	13



DIMENSIONS:



3545 Harbor Gateway South, Suite 103, Costa Mesa, CA 92626, (800) 854-3218 www.SHURFLO.com

All Pentair trademarks and logos are owned by Pentair, Inc. All other brand or product names are trademarks or registered marks of their respective owners. Because we are continuously improving our products and services, Pentair reserves the right to change specifications without prior notice. Pentair is an equal opportunity employer.